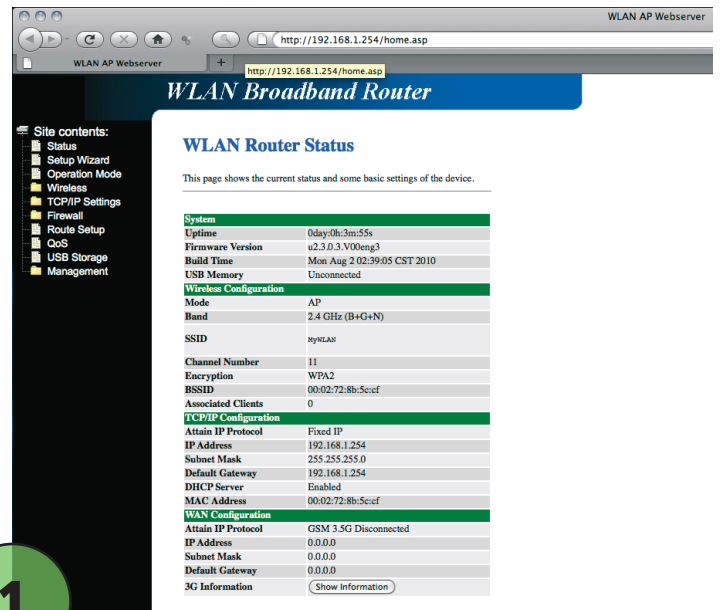


ABEO 11n mini router-imik ikkussuussineq

USB modem-it simkortitalik ABEO routerimut attavileruk qarasaasiannullu kabelissaa attavileriarlugu innaallagissamut ikillugu

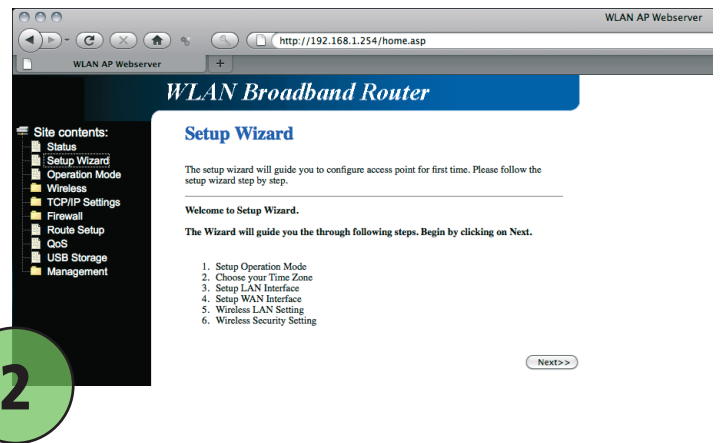
Internetimut browserit (ass. Internet explorer) ammaruk adressillu allaffissartaanut „192.168.1.254“ allallugulu. Tamatuma routerinnut aaqjiissutitit ammaatissavai (*Assiliartaq 1*). Tamanna sivilaarsinnaavoq routeri aallartinniaqqaalaartussaammat. Imaassinnaavoq marlussoriarluni misilinneqartari-aqartaq.

1



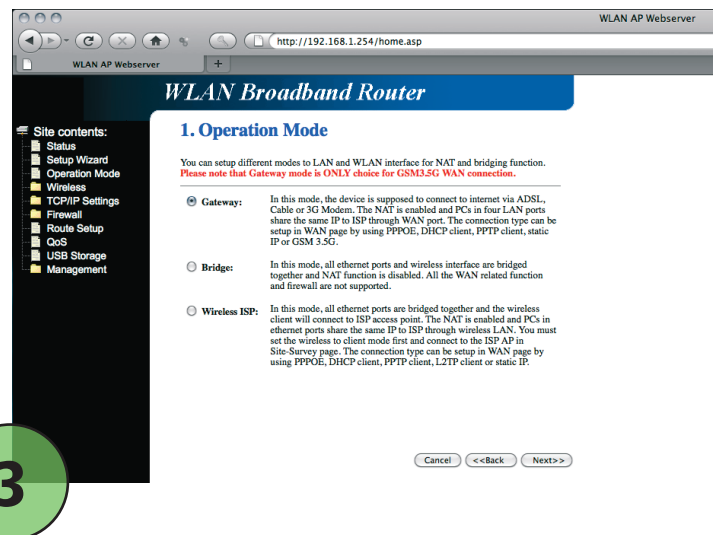
„Setup Wizard“ tooruk assimilu 2-mi saqqummissaatit. „Next“ tooruk

2



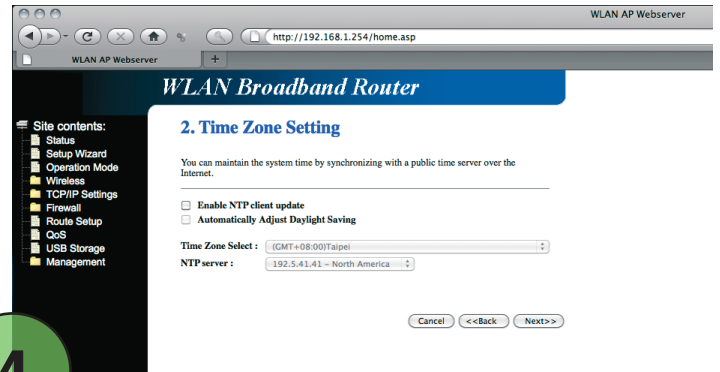
Assimi 3-mi soorlu takusinnaagit „gateway“ nalu-naaqutserneqarsimassaaq, kingornalu tuussavat „Next“

3



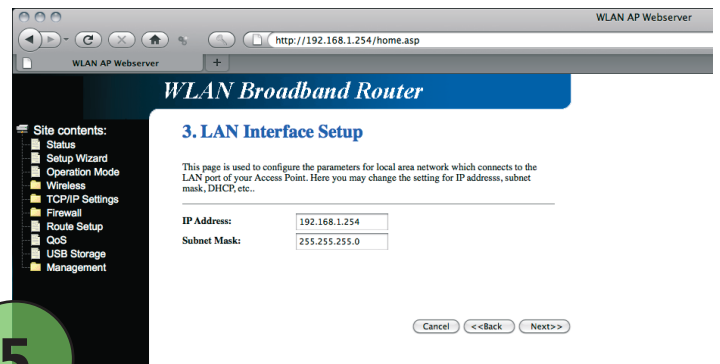
„2. Time Zone settings“-ip ataani nalunaaquttap ingerlaqatigiiffia eqqortoq malillugu aqqissaner-soq nammineq toqqarneqarsinnaavoq, malugiulli tamanna piumasaqaataangimmat routerip led-ningeqanngitsup atorsinnaasuunissaanut. „Next“ tooqqiguk

4



„3. LAN Interface Setup“-ip ataani IP adressi imaluunniit Subnet mask allanngortinneqassanngikka-luarput, taakku nalinginnaasumik ator neqartar-tutut aqqitaammata. Allanngortikkaanni allannguutit allannissaat eqqaamasariaqarpoq, aqqiissutinut iseqqinniarnermi allanngortitsinerit ator neqartussaammata. „Next“ tooqqiguk

5



Assimi 6-imi „4. WAN Interface Setup“-imi una allanneqassaaq:

WAN Acces Type: Toqqaruk „GSM 3.5G“

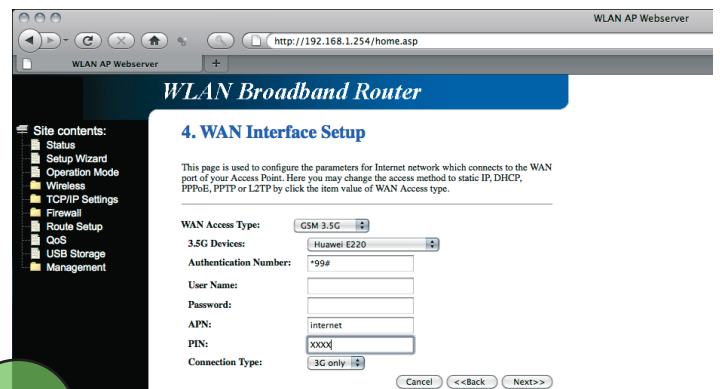
3.5G Device: Huawei E220 imaluunniit E180 (Malugiuk, taanna tassaavoq USB modemi Tele Greenlandip nioqqutigisaa)

Authentication Number: *99#

Username aamma Password: Allaffigineqassanngil-lat

APN: „internet“-imik allassimassaaq (malugalugu, oqaatsimi tamarmi naqinnerit mikisut ator neqas-sapput)

6



PIN: Tassunga allanneqassaaq PINKodi simkortimut ilaasoq, simkortillu puuani atuarneqarsinnaasoq

Connection type: 3G only

„Next“ tooruk

Assimi 7-imi „5. Wireless Basic Settings“-imi uku toqqarneqassapput:

Band: 2.4 Ghz (B+G+N)

Mode: AP

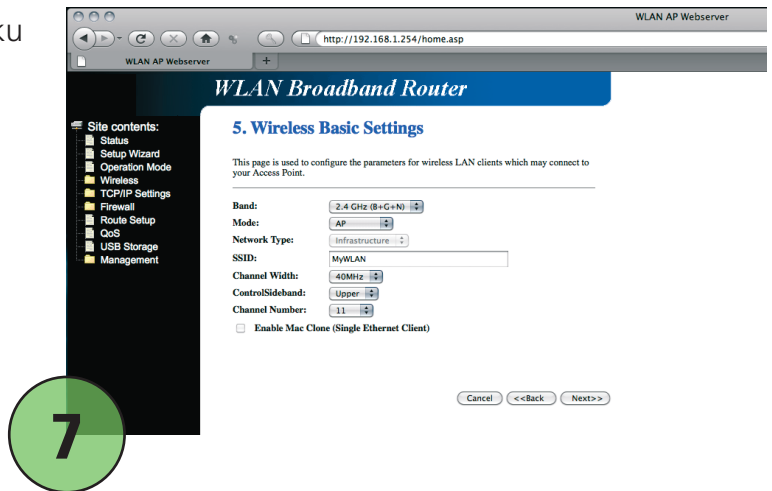
Network type: Infrastructure

SSID: Tassani toqqarneqassaaq nammineq attaveqaatigisamut ledningeqanngitsumut taaguutigumasaq

Channel width: 40 Mhz

Controlsideband: Upper

Channel number: 11

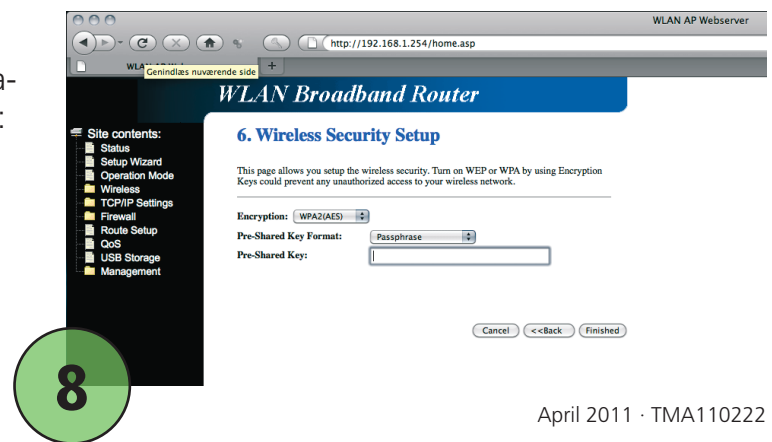


Assimi 8-mi toqqarneqassapput paasiuminaallisaa-tit sorliit atornissaat. Tassunga inassutigineqarput:

Encryption: WPA2(AES)

Pre-shared Key Format: Passphrase

Pre-shared key: Tassani toqqarneqassaaq kodi attaveqaammut ledningeqanngitsumut iserniaraanni allattorneqartartussa.



April 2011 · TMA110222